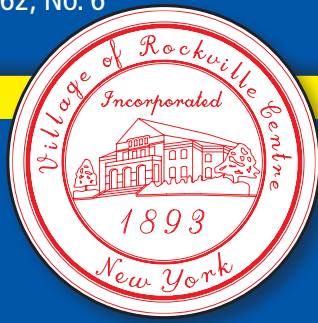


# THIS MONTH IN

# Rockville Centre



December 7  
Pearl Harbor Day  
December 7, At 7 P.M.  
BOARD OF TRUSTEES  
December 9, At 7:30 P.M.  
BOARD OF ZONING APPEALS  
December 15, At 7 P.M.  
PLANNING BOARD  
Friday, December 25  
CHRISTMAS  
Village Offices Closed  
Friday, January 1  
NEW YEAR'S DAY  
Village Offices Closed  
January 4, At 7 P.M.  
BOARD OF TRUSTEES  
January 13, At 7:30 P.M.  
BOARD OF ZONING APPEALS  
Monday, January 18  
MARTIN LUTHER KING, JR. DAY  
Village Offices Closed  
January 19, At 7 P.M.  
PLANNING BOARD  
January 27, At 7:30 P.M.  
BOARD OF ZONING APPEALS  
Events are at Village Hall  
unless otherwise indicated.

## Sanitation Schedule

**Wednesday, December 23, 2015**

Normal bulk and paper pickup

**Thursday, December 24, 2015**

Normal Monday/Thursday pickup

**Friday, December 25, 2015 Christmas Day**

No trash collection

**Saturday, December 26, 2015**

will be Friday's collection

**Wednesday, December 30, 2015**

Normal bulk and paper pickup

**Thursday, December 31, 2015**

Normal Monday/Thursday pickup

**Friday, January 1, 2016 New Year's Day**

No Trash Collection

**Saturday, January 2, 2016**

will be Friday's collection

**Monday, January 18, 2016**

**M.L.K. Jr. Birthday**

No trash collection

Normal Monday/Thursday trash collection will be on Tuesday and Thursday

Normal Tuesday/Friday trash collection will be on Wednesday and Friday

**Wednesday, January 20, 2016**

No bulk items or paper pickup

During holiday weeks, paper products may be deposited Monday through  
Friday at DPW headquarters 10 Sunrise Hwy

## Village Hall Hours

Cashier & Registrar 8:00 A.M. - 3:00 P.M.

Court Counter 8:00 A.M. - 3:30 P.M.

Electric/Water Billing 8:00 A.M. - 4:00 P.M.

Tax Department 8:30 A.M. - 4:00 P.M.

Closed Saturday and Sunday

## 28th Annual Mayor's Golf Classic A Success

The 28th Annual Mayor's Golf Classic proved to be a success. The primary fundraiser for the RVC Community Fund, raised over \$50,000. The Community Fund, dedicated exclusively to helping members of the Rockville Centre community, has raised more than \$1.5 million in emergency assistance since 1987.

The Classic honored the Board of Directors of the RVC Basketball League. Celebrating its 60th anniversary, the League has over 1,200 kids registered and over 90 local sponsors. The League's values of "loyalty, behavior and leadership" have remained consistent with the main objective to give all participants an opportunity to play. This year marked the beginning of



Mayor Francis X. Murray and the Board of Trustees honored Greg Fanning, sixth from left, and the other members of the Rockville Centre Basketball League's Board of Directors at the 28th Annual Mayor's Golf Classic.



Pictured with the 2015 Eugene Murray Outstanding Citizenship Award recipient Janet Poggi, from left, is Mayor Francis X. Murray, Trustee Edward Oppenheimer, Trustee Emilio Grillo, former mayor Gene Murray, Trustee Michael Sepe and Deputy Mayor Nancy Howard.

Hoops For All, the League's first special needs clinic. The 2015 Eugene Murray Outstanding Citizenship Award was presented to Janet Poggi.

"The RVC Basketball League and those who keep it running everyday have proven to be an invaluable friend to our community," commented Mayor Francis X. Murray. "Their time and commitment to the our youth does not go unnoticed. Janet Poggi is another fine example of residents who give of themselves. We appreciate all she does on behalf of this great Village."

## Mayor Murray Steps in As Village Administrator



Mayor Francis X. Murray has stepped in as the interim Village Administrator while the Board of Trustees conducts a comprehensive search to fill the position. Murray will be filling the role to streamline services at no cost to the Village. The vacancy was created after Keith Spadaro vacated the position to go into the private sector.

"The Board of Trustees has complete confidence in Mayor Murray to bring the highest level of experience and leadership, as well the professionalism of all the

department heads and staff while a search is conducted," commented Deputy Mayor Nancy Howard. "The Village will continue to provide all services and functions without any loss."

In his new role, the Mayor will supervise nearly 20 departments and be responsible for the day-to-day operations of the Village. At the same time the Mayor will continue to perform all duties as Mayor.

"Throughout his first term as Mayor, Fran was both interested in and heavily involved in nearly every facet of Village government," stated Michael Schussheim, Village Comptroller. "I have every reason to believe that he will be an outstanding interim Village Administrator."

"The Village is conducting a thorough search to find a candidate who can demonstrate experience in strategic planning, public finance and intergovernmental relations," commented Mayor Francis X. Murray. "The chosen candidate will assist the Board of Trustees in continuing to grow and develop this Village while holding down taxes by increasing efficiencies across every department and aggressively seeking grants and gifts. I look forward to filling the position until such a candidate is found."

## Mayor Murray Announces Free Parking on Saturdays in December to Promote Local Holiday Shopping

As the holiday shopping season gets underway, the Mayor, along with the Board of Trustees, would like to remind residents to shop local and promote our thriving downtown. In recognition of the importance of shopping local, the Mayor announced that parking will be free for patrons on Saturdays during the month of December and on Small Business Saturday on November 28th.

"When you buy local you support local families, promote employment and add to our tax base," commented Mayor Francis X. Murray. "Buying locally sustains the unique character and quality of life that exists in Rockville Centre. We have a great variety of shops to meet every holiday shopping list."

According to elocal.com, if the citizens of an average American city were to shift 10% of their spending to local businesses, it would bring an additional \$235 million per year to that community's economy.

Downtown Rockville Centre remains a diversified and vibrant business district. The Village is home to some one-of-a-kind specialty boutiques, yet there are choices to meet the needs of any family - home furnishings, sporting goods, clothes, hardware stores, florists, drug stores, gift shops, and a variety of other options. A diverse selection of restaurants allows residents and visitors to complete a long day of shopping.

PRSR STD  
U.S. POSTAGE  
PAID  
Hicksville, NY 11801  
Permit No. 70

THIS MONTH IN

Rockville Centre

One College Place, P.O. Box 950  
Rockville Centre, New York 11571



# Around Our Community

## Village Welcomes 2 New Police Officers

Two officers took the oath of office at the November Board of Trustees meeting. Police Commissioner Charles Gennario swore in new Officers Michael Rollo and Brian Vacchio.

"Police Officers in our Village make significant sacrifices every day to ensure our safety and maintain our peaceful neighborhoods," commented Mayor Francis X. Murray. "When others are running away from danger, they run toward it, putting their lives on the line in pursuit of helping innocent bystanders and victims and pursuing criminals."

Officer Rollo was born in Flushing,



New York and was raised in Nassau County by his parents Max and Debbie. Officer Rollo graduated from W. T. Clarke High School in 2005 and attended the University

of New Haven earning a Bachelor of Science in Forensic Science and Chemistry. Michael started his police career in the New York City Police Department in January 2013 where he worked patrol in the 115th Precinct.

Officer Vacchio was born and raised in Nassau County. He attended college at both Delaware Valley College and C.W. Post. Brian started his police career with the New York Police Department in July of 2008. He worked in the 79th precinct for over two years and another five years in the 110th precinct. During his time with the NYPD, Brian

received multiple awards including two Commanders Day Awards, Cop of the Month Award, and the Corona Lions Club of Community Policing Appreciation Award. Brian also was awarded Excellent Police Duty medal seven times and Meritorious Police Duty medal two times. He worked in various units in the NYPD including patrol, conditions, highway, traffic, safety and anti-crime.

"I feel extremely confident that these two new Officers will continue to keep our community a safe home to work, play, and raise a family," continued Mayor Murray.

## Village Bids Farewell to Keith Spadaro



Employees came out in droves to wish former Village Administrator Keith Spadaro farewell on October 9th. Mr. Spadaro stepped down to take a job in the private sector. "Rockville Centre has been truly fortunate to have a man of Keith's integrity background and experience as its Village Administrator for the past three and a half years,"

commented Mayor Francis X. Murray. Mr. Spadaro was presented with a Proclamation for his expertise, professionalism and dedication in maintaining and rebuilding the Village while helping to hold down taxes by increasing efficiencies across every department and attracting new businesses to the Village.



## Teen Mentoring Group Celebrates Good Deeds

The Dr. Martin Luther King, Jr. Community Center serves as a vibrant neighborhood-gathering place that strives to provide residents of Rockville Centre with the tools and knowledge to support their dreams. One of the

many innovative programs being offered is the Mentoring Program. This program provides members with assistance with educational, recreation and social issues. In addition, the program strives to teach members how to give

back including visiting the sick and volunteering to feed the homeless. Pictured are members celebrating the good deeds they performed with a lasagna dinner.



### Pearl Harbor Day

The Village of Rockville Centre and American Legion Post #303 will host ceremonies, including casting a wreath on the water, at Mill River Park on Monday, December 7th beginning at 10:30 a.m., honoring the courage and sacrifice of American troops who defended Pearl Harbor in 1941. Everyone is invited to the Post at 197 Maple Avenue for food and refreshments after the ceremony.

### Village Christmas Tree Lighting

Join the Mayor and the Board of Trustees for the annual Christmas Tree lighting at the Village Green on December 3rd at 7:30 p.m.

### 'Nutcracker'

The Rockville Centre Guild for the Arts' annual production of the classic Tchaikovsky ballet The Nutcracker will be performed this year on Friday, December 11th at 7:30 p.m., Saturday, December 12th at 5 p.m. and Sunday, December 13th at 4 p.m. at the Madison Theatre at Molloy College. Call 516-766-7171 for reservations.

### MLK Christmas

Santa will visit the Martin Luther King, Jr. Community Center on Friday, December 18th at 4:00 p.m.

### Leaf pickup

Bagged leaves will be collected from the curb strip as follows:

- Monday - South of Sunrise Highway (East of Long Beach Road)
- Tuesday - North of Sunrise Highway (between Hempstead Ave & Long Beach Road)
- Thursday - North of Sunrise Highway (West of Hempstead Avenue)

The last day of leaf pickup is Friday, December 18, 2015.

### January Tree Pick-ups

Discarded Christmas trees will be picked up from the curb-strip January 13th-29th on Wednesdays, Thursdays (of your regular scheduled garbage collection day) or Fridays (of your regular scheduled garbage collection day) only. The trees should be placed at the curb without lights and not in plastic bags since they will be recycled.

### "Margaritaville"

RVC Community Fund presents "Margaritaville," to be held at St. Agnes Parish Center on Friday, February 5th at 7 p.m. Guests will enjoy dinner and dancing while listening to the sounds of Jimmy Buffet. All proceeds will go to the RVC Community Fund. For further information, call 678-9260.

#### E-CYCLING

EVERY FIRST SATURDAY OF THE MONTH  
10:00 a.m. TO 2:00 p.m.

Residents may bring their electronics  
Note: E-CYCLING will remain open all year

#### ACCEPTABLE E-CYCLING ITEMS

Computers / Computer monitors  
Anything that plugs into a computer  
Televisions / Small Electronics  
VCR \* DVD \* I PAD \* GPS  
Video Systems  
Cable Boxes  
Small Servers  
Camera or Video Cameras  
Telephones (any type)  
Calculators

### Tax Office

Real estate tax exemptions are available to volunteer firefighters with five years or more of certified service and to veterans based on the date and type of military service. The maximum assessed value that may be exempted varies with the status of the veteran claimant: non-combat and Cold War \$799; combat \$1,332; and disabled up to \$2,664 based on the percent of disability.

Real estate tax exemptions are also available to disabled homeowners and to senior homeowners 65 and older with a 2014 gross income not exceeding \$37,400.

All applications for partial exemption from Village real estate taxes must be filed by December 31, 2015.

Applications are available by visiting the Tax Office on the second floor of Village Hall at One College Place weekdays between 8:30 a.m. and 4 p.m. or by calling 516 678 9242.

New property owners and those who have mortgages that have been satisfied, refinanced or sold to another lending institution are reminded to notify the Tax Office as soon as possible in order to avoid billing errors that may lead to penalties for late real estate tax payments.

## Village Hall Comments



**Deputy Mayor  
Nancy Howard**

The Village has begun performing a much-needed face-lift to Eugene Murray Hall, also known as Village Hall. One of the most historic buildings in our Village, Murray Hall is overdue for this work. We expect to have the renovation of the exterior completed by February 2017, which marks the building's 125th anniversary.

Murray Hall was built in 1892 as the first South Side High School. Designed by a local architect, A.W. Pierce, the building at the time was a highly regarded structure for our Village and the South Shore of Long Island.

Constructed of brick and stone, its architectural distinctions included a

large bell tower and arches incorporated into the brickwork. It had five classrooms connected by a center hall stairway, but no electricity or running water. Entrances in front and rear were used to separate the boys from the girls and to provide discreet access to the outdoor toilet facilities. We have come a long way!

Other than the removal of the bell tower and the placement of a Municipal Hall slab over the South Side High School engraving, the building went largely unchanged for several decades. An interior redecoration occurred in the early 1950's. And in the early 1960's the building received "a paint job to weatherproof the 70 year old brick," according to the Village's Annual Report from 1962.

Nevertheless, the building was considered "woefully inadequate" and improvements were "long overdue" just a few years later. A renovation in the 1970's added an elevator and two small additions and a portico in the rear,

replaced windows and repainted the exterior. This was in lieu of a wholesale renovation, which was considered but deemed too costly.

This pattern of deferred maintenance, capital replacement and improvement brings us to today, with the building in a similar state to what it was in the mid-1970's. We find ourselves at a point where certain repairs are necessary and imperative.

The Village's Engineering Department developed a recent scope of work that identified several items requiring immediate attention. The white cementaceous stucco that had been applied to the exterior brick is badly

cracking and peeling, and we have identified a process that will repair and repaint it and that will begin this spring. The slate roof was in disrepair and required replacement, that work has been completed. In addition, the fire escape and exterior wrought iron railings will be refurbished, windows need recaulking, masonry needs repointing and the bluestone slabs on the stairs will be stabilized.

The interior of the building will be addressed once the exterior work is complete.

## Sandel Center Spreads Holiday Cheer



Join the Sandel Senior Center this holiday season. The building will be bustling with a multitude of activities this winter for all to enjoy.

South Side Middle School performers will be bringing holiday cheer with a special performance on December 15th. After a general meeting on December 18th, members will enjoy poetry reading of original works by Emily Ferreira. Come celebrate the season with a great party at Temple Avodah in Oceanside, the winner of many awards for culinary excellence on December 16th. The afternoon includes lunch and dancing to the music of Steve Cassano. Reserve your seat for the Center Stage Holiday performance and luncheon on December 19th. Join Sandel members and South

Side High School students for an Intergenerational Holiday Party featuring entertainment, sing a long, refreshments and sharing on December 21st. The annual post New Year's celebration will feature great music, dancing, food, and plenty of laughs on January 8th.

Please contact the Sandel Center for all regularly scheduled classes and programs featuring that include many levels of exercise classes, trips, guest speakers, arts, discussion groups, volunteer opportunities and much much more.

Adults ages 60 plus, who reside in Rockville Centre and the surrounding communities, are encouraged to visit, and consider joining the Sandel Club. For information about the Rockville Centre Department of Senior Services, the Sandel Senior Center, or any of the programs and services offered, please call 678-9245.

## GOLDEN GATHERING SENIOR HEALTH FAIR



Hundreds of residents came out for Senator Dean Skelos 13th Annual Golden Gathering Senior Health Fair. Free flu vaccinations, blood pressure screenings, and other free health care services were available for all attendees. A variety of informational materials and demonstrations were on hand from nearly 50 federal, state and local government agencies, health care organizations, and other important groups.

## Don't be Left in the Dark... Register for Swift 911

Get alerted about emergencies and other important community news by signing up for the Village's Swift 911. This system enables the Village of Rockville Centre to provide residents with critical timely information in a variety of situations, such as severe weather, unexpected road closures, missing persons, evacuations of buildings or neighborhoods, and power outages.

On October 14th, a loss of power occurred throughout the village for two hours in the morning. During

that time thousands of phone calls flooded the Rockville Centre Police Department. Unfortunately these calls can tie up the RVCPCD phone lines for real emergencies. During the outage, a Swift 911 was made to all registered residents to inform them of the outage. We ask that all other residents sign up for the service to be informed and only dial 911 in true emergencies.

Residents can register for Swift 911 on the Village's website at [www.rvcny.us](http://www.rvcny.us).

### THIS MONTH IN

## Rockville Centre

Published by the Village  
of Rockville Centre

**Mayor**  
Francis X. Murray

**Trustees**  
Nancy Howard  
Edward J. Oppenheimer  
Michael Sepe  
Emilio F. Grillo

[www.rvcny.us](http://www.rvcny.us)

## RVCPCD Wins Bronze Award in AAA's Annual Traffic Safety Program



The Village of Rockville Centre won a Bronze Award in AAA Northeast's Community Traffic Safety Awards Program. The Village was cited for its many traffic safety efforts including seat belt enforcement and holiday DWI checkpoints. The Village was also presented with a Pedestrian Safety Citation for having one consecutive year without a pedestrian fatality. Pictured is John Corlett, Director of Public / Government Affairs & Traffic Safety for AAA Northeast, presenting the Bronze Award for Community Traffic Safety to RVCPCD Commissioner Charles Gennario (center) and Lieutenant James Vafeades (right) during the Club's 51st annual Traffic Safety Awards luncheon.



# The John A. Anderson Recreation Center



Bestow the gift of warmth this holiday season. The Recreation Center is taking donations of new hats and mittens to benefit those less fortunate.

## Winter Programs Registration

Registration for Winter programs begins Monday, November 9th for residents and returning program participants. Non-resident registration starts on November 16th. Registration is open until classes reach their maximum enrollment. Along with perennially popular programs such as gymnastics, swimming, Tae Kwon Do and Tumbles, the Recreation Center now offers Yoga for adults, Cheerleading, Learn to Play Chess for kids, as well as new programming for infants, toddlers and preschoolers. Check out the schedule on our website or pick up detailed flyers at the office. Programs begin the week of January 4th.

## Nursery School Registration

Nursery School registration for the 2016-2017 school year begins Monday, November 16th and is on-going until classes are filled. Call the Recreation Center office with any questions or to arrange a visit. Children entering Kindergarten in 2017 and 2018 are eligible to participate. Morning and afternoon sessions are offered.

## Food Donations Needed

The Recreation Center is accepting donations of canned and dry goods as well as frozen for distribution to the needy in our community. Coupons for turkeys and gift cards for grocery stores may be dropped off at the Recreation Center as well.

## Crafts Fair and Flea Market

Shop for holiday gifts and decorations on Sunday, December 6th from 9:30 a.m. to 4:30 p.m. A variety of vendors will be featured showcasing jewelry, floral arrangements, ornaments, crafts, and edibles.

## Annual Christmas Tree Lighting

An evening of song and fellowship officially opens the holiday season at 7:30 PM on Thursday, December 3rd at the Village Green. Santa and his helpers will be on hand to add to the festivities.



## Chanukah Party

Children from pre-kindergarten through second grade of all faiths are invited to the annual party sponsored by the National Council of Jewish Women and the Recreation Department on Monday, December 7th from 5 to 6:30 p.m.

## North Pole Calling

Children in kindergarten through second grade can speak directly to Santa again this year. You can receive a call on Tuesday, December 8th or Wednesday, December 9th. Parents can fill out a "helpful hints" sheet at the Recreation Center.

## Breakfast with Santa's Helpers

The annual breakfast on Sunday, December 13th is one of the Recreation Center's most popular events. Join the elves who serve pancakes, cereal, juice, milk, rolls, and bagels. After eating Vixen's Fixins, kids may visit Santa, have a picture taken with Rudolph or Frosty and have a ball in Prancer's Playland.

Tickets go on sale November 16th and are sold on a first come first served basis. There is a choice of three seating's: 9:15, 10:15 or 11:15 a.m. Tickets are \$7.00 per person and are available at the Recreation Center office. We hear they will be selling like hotcakes!

## Annual Mitten and Hat Tree

The Rockville Centre Parks and Recreation Department requests residents to share their warm holiday feelings with those less fortunate by donating new hats and mittens of all sizes and colors beginning December 3rd. The donations will be hung on the Mitten and Hat Tree in the Recreation Center lounge.

## Holiday Recess Events

Join in some holiday fun during the school recess. In-house programs and trips to the movies, Laser Bounce and Bounce U are just some of the fun the Recreation Center has planned. See detailed flyers for dates and times of activities and events.

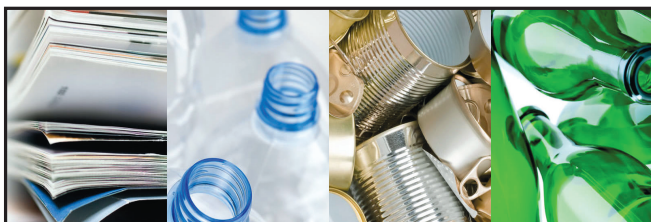
## Recreation Department Gift Certificates

Gift certificates of any denomination are available for your holiday gift giving. This is the perfect gift for your children or grandchildren and can be applied to any program, activity or birthday party!

**DETAILED INFORMATION  
FOR ALL ACTIVITIES  
CAN BE FOUND AT THE  
RECREATION CENTER  
OFFICE OR ON THE  
RECREATION CENTER  
WEBSITE AT  
[WWW.RVCREC.WEBBLY.COM](http://WWW.RVCREC.WEBBLY.COM)**



## Recycle Wednesday



Cardboard, product packaging, magazines, catalogs, and junk mail can all be recycled on Wednesdays.

During holiday weeks, paper products may be deposited Monday through Friday at DPW headquarters, 10 Sunrise Highway.

### PLEASE NOTE DISPOSAL OF USED MEDICAL NEEDLES

Used medical needles must be discarded at The Department of Health, any local hospital or nursing home.

**\*DO NOT DISCARD USED NEEDLES IN HOUSEHOLD REFUSE**



Join Santa and his helpers for the annual breakfast on Sunday, December 13th at the Recreation Center.



Ragamuffins Take Over the Village  
The Recreation Center held its annual Ragamuffin Parade on October 25th. Hundreds of residents showed off their Halloween costumes as they marched. The parade ended at the Recreation Center where kids and their families were able to enjoy snacks and play games and create holiday crafts.

# Snow Newsletter



*Deputy Superintendent of Public Works John Thorp, Deputy Mayor Nancy Howard, Trustee Emilio Grillo, and Mayor Francis X. Murray with the Public Works Department snow removal crew.*

## Get Ready for Winter!

### Before the Snow Falls

The Rockville Centre Department of Public Works located at 10 Sunrise Highway uses the fall months to prepare for the upcoming winter months. The Department of Public Works is where vehicles are serviced and equipment is checked. They store about 800 tons of salt and 3,000 gallons of calcium chloride. When snow is expected, someone is always on duty to report when the snow begins to fall.

### When the Snowfall Starts

The Department of Public Works employs nearly 50 experienced, full-time workers who are on the job around the clock, if necessary. They operate 20 vehicles dedicated to removing snow from 52 miles of roadway.

The first step is salting the streets, beginning with the Village's main roads and downtown areas. When the temperatures are very low, liquid calcium chloride is added to the mixture of salt. Applications continue until the streets are cleared or until the snow is too deep for the chemicals to be effective.

### When the Snowfall Continues

Plowing becomes more effective than salting when three or four inches of snow have accumulated.

The main roads and residential streets are plowed by crews who are assigned to eight plow zones. The crews will be working throughout a storm.

The first priority is to open the main roads to provide safe access for emergency vehicles and to maintain safe traffic flow. The plows continue to clear all streets in each zone until every road is safe. If the storm continues, the crews continue working in the same pattern until the storm ends.

When the snow ends, the trucks begin to clear the intersections and widen out all of the roads by pushing the accumulated snow back to the curbs.

### After the Storm is Over

Our crews continue to monitor all the roads for icy conditions and where winds may redeposit snow onto the roadways. Salt and/or sand are usually applied to ensure that all surfaces remain safe to drive on.

Residents and business owners are reminded that all sidewalks must be cleared within 24 hours after the end of a storm. Residents should NOT throw snow into the roadway when clearing their driveways and sidewalks.

To report a hazardous condition, call The Department of Public Works at (516) 678-9267. For medical emergencies and the police department call (911).

# Snow Newsletter

## When Snow Falls:



## Help Us Help You

### Be Prepared, Be Aware, Be Patient

Before it snows, make sure you have your tools and supplies handy such as shovels, ice chippers, snow blowers, salt, sand and calcium chloride. If you hire someone to do snow removal, make sure your arrangements are in advance. PLEASE move cars off of the street.

Please do not go out during or immediately after a snowstorm unless it is necessary. Crews have many hours of hard work to clear away the snow. The crews will be able to do their job more quickly and completely if there is less traffic on the roads. In the best conditions, it can take 8 to 10 hours after the snow has stopped falling to complete the snow removal operations.

Snow removal is a difficult and time consuming task. Please understand The Department of Public Works cannot shovel out your driveway entrance or plow out any private property.

### Tips and Suggestions

1. If snow is expected, move your cars into the driveway. Parking on the streets during a snowstorm is prohibited.
2. If you are shoveling out the entrance of your driveway, never throw snow directly into the street. Shovel onto the curb-strip or other area of your property.
3. If possible, finish clearing your driveway AFTER the final widening pass by the snow plow. This is usually 3 to 10 hours after the snow stops falling, (depending on the severity of the storm). DO NOT throw snow into the street.
4. If you have to go out during hazardous driving conditions, please remember to drive slowly, brake slowly, allow plenty of room between you and the vehicle in front of you and watch for sudden obstructions.
5. Plan alternate ways to travel to main routes and to your place of employment. Please give yourself extra time to get there.



***The Rockville Centre Fire Department reminds you to clear snow away from any fire hydrants on your property so they may be located easily in case of an emergency.***

# SANITATION DEPARTMENT REGULATIONS

(Residential Areas Only)

## COLLECTION SCHEDULE

### SECTION



Monday	Solid Waste
Wednesday	Bulk Items & Recyclable Paper Products
Thursday	Solid Waste



Tuesday	Solid Waste
Wednesday	Bulk Items & Recyclable Paper Products
Friday	Solid Waste

To find out what your recycle day is for glass, cans and plastics, go to the Village website at: <http://www.rvcny.us/recycle/recycle.html> and enter your street address.

Collections will be made from the curb in front of all houses in accordance with the following regulations:

### TIMES and PLACEMENT

Solid waste and bulk items must be placed on the curbstrip (not the roadway) no later than 7:30 A.M. on collection days. Items may be placed on the curbstrip the evening before pick-up. Materials put out late for collection will not be picked up. Empty containers must be removed from the curb area as soon as possible after pick-up and no later than 6 P.M.

### CONTAINERS

Solid waste should be placed in metal or plastic containers with handles, non-attached covers, and with no holes or rips; or in sealed black plastic bags; or in sealed moisture-proof paper bags. Filled containers may weigh no more than 50 pounds.

### SOLID WASTE

**Includes:** food waste; soiled or otherwise unrecyclable paper products; waxed cartons and packages, such as those used for beverages and frozen foods; plastic toys, utensils and tableware; discarded clothing.

Does NOT include: leaves (which are collected in special bags in the Fall); broken glass; concrete; construction debris; propane tanks; hazardous materials (paints, solvents, batteries, which may be disposed of through the Town of Hempstead's S.T.O.P. program – call 378-4210).

### BULK ITEMS

Call 678-9216 before Noon on Tuesday for Wednesday pick-up of waste items too large for insertion into trash containers: branches and wood debris in bundles no more than 4 feet in length and weighing no more than 50 pounds; furniture; mattresses; rugs; household appliances (dishwashers, refrigerators (with doors off), stoves).

### RECYCLABLES – Glass, Cans, Plastics - Collection Day Depends on Area

Glass, metal and plastic containers should be rinsed out and placed in a blue Rockville Centre recycling bin, a designated container with an RVC recycling sticker attached, or in a clear plastic bag. Call 678-9216 for a replacement bin or a recycling sticker.

**Includes:** all plastic supermarket food containers (catsup, mayonnaise); plastic deli and take-out containers; all plastic beverage containers (water, milk, juice); and plastic containers for detergents and other cleaning products.

**Does NOT include:** other types of plastic, such as those used in toys, utensils and tableware, which will contaminate the recycling stream and should be discarded as regular trash.

### RECYCLABLES – Paper Products - Collection Wednesdays

**Includes:** newspapers; magazines; brochures and catalogs (including glossy catalogs); telephone books; cardboard boxes and cardboard packaging, gift boxes and food packaging (with any waxed or plastic paper inserts removed); photocopy and printer paper and packaging; writing paper, drawing paper, note paper, wrapping paper; junk mail postcards and envelopes (including windowed envelopes); index cards; manila folders, binder dividers; old files and reports; computer printouts; and register tapes. Stapled paper can be recycled; remove all other fasteners. Shredded paper should be placed in paper bags or clear plastic bags.

Magazines, catalogues, telephone books, as well as other paper products listed and collapsed cardboard may be tied into bundles, collected inside cardboard boxes whose flaps can be closed, or put into paper bags or clear plastic bags.

**Does NOT include:** carbon paper and self-carbonized paper; typewriter ribbons; cellophane, sticky tapes and adhesive labels; rubber bands and metal fasteners and clips; facial tissue and paper towels; food wrappers, foil wrappers, waxed cartons and packages, such as those used for beverages and some frozen foods.

### E-CYCLING

Includes: computers, computer monitors or anything that plugs into a computer, televisions, small electronics, vcrs, dvds, iPads, gps, video systems, cable boxes, small servers, cameras or video cameras, any type of telephones and calculators.

### SPECIAL ITEMS

The following items should be separately contained and the containers prominently marked: broken glass, sharp instruments.

### DISCARDED MEDICAL SUPPLIES

Used medical needles must be discarded at any local hospital, nursing home or The Department of Health.

**DO NOT DISCARD USED NEEDLES IN HOUSEHOLD REFUSE**

### EXCLUDED ITEMS

Rockville Centre will not accept contractor or medical waste, ammunition, explosives, propane tanks, broken concrete, or unlabeled materials.

### HAZARDOUS MATERIALS

Call the Town of Hempstead's STOP program at (516) 378-4210 for monthly drop-off locations for hazardous or toxic household chemicals and products such as paints, solvents, varnish, waste oil, antifreeze, batteries, fluorescent bulbs, car tires (off the rim), photography and pool chemicals.

# VILLAGE OF ROCKVILLE CENTRE

# RVC OFFICIAL SANITATION SCHEDULE HOLIDAY WEEKS 2016

POST FOR EASY REFERENCE

- = NORMAL MONDAY AND THURSDAY PICK-UP ROUTE\*
- = NORMAL TUESDAY AND FRIDAY PICK-UP ROUTE\*
- ✕ = HOLIDAY – NO SANITATION COLLECTION

NOTE: FOR EASY REFERENCE, PLEASE COLOR CODE EITHER SQUARES OR CIRCLES,  
WHICHEVER REPRESENTS YOUR NORMAL PICK-UP DAYS

\*Enter your street address on the Village website <http://www.rvcny.us/recycle/recycle.html> to check your pick-up days.

	SUN.	MON.	TUES.	WED.	THURS.	FRI.	SAT.
<b>JANUARY 2016</b>							
<b>NEW YEAR'S</b>	DECEMBER 27	DECEMBER 28 ○	DECEMBER 29 □	DECEMBER 30 RUBBISH & PAPER	DECEMBER 31 ○	JANUARY 1 ✕	JANUARY 2 □
<b>JANUARY 2016</b>							
<b>M.L KING JR.'S BIRTHDAY</b>	17	18 ✕	19 ○	20 □	21 ○	22 □	
<b>FEBRUARY 2016</b>							
<b>PRESIDENT'S DAY</b>	14	15 ✕	16 ○	17 □	18 ○	19 □	
<b>MAY 2016</b>							
<b>MEMORIAL DAY</b> (Observed)	29	30 ✕	31 ○	JUNE 1 □	JUNE 2 ○	JUNE 3 □	
<b>JULY 2016</b>							
<b>FOURTH OF JULY</b>	3	4 ✕	5 ○	6 □	7 ○	8 □	
<b>SEPTEMBER 2016</b>							
<b>LABOR DAY</b>	4	5 ✕	6 ○	7 □	8 ○	9 □	
<b>OCTOBER 2016</b>							
<b>COLUMBUS DAY</b> (Observed)	9	10 ✕	11 ○	12 □	13 ○	14 □	
<b>NOVEMBER 2016</b>							
<b>VETERAN'S DAY</b>	6	7 ○	8 □	9 RUBBISH & PAPER	10 ○	11 ✕	12 □
<b>NOVEMBER 2016</b>							
<b>THANKSGIVING</b>	20	21 ○	22 □	23 RUBBISH & PAPER	24 ✕	25 ○	26 □
<b>DECEMBER 2016</b>							
<b>CHRISTMAS</b>	25	26 ✕	27 ○	28 □	29 ○	30 □	

NOTE: DURING HOLIDAY WEEKS, NO NEWSPAPER OR BULK COLLECTIONS ON WEDNESDAYS  
(EXCEPT VETERANS DAY, THANKSGIVING DAY, NEW YEARS DAY)

SEE OTHER SIDE FOR SANITATION DEPARTMENT REGULATIONS. FOR INFORMATION OR QUESTIONS, CALL 516 678-9216.